



**WI-CPE211 V2**  
**2.4GHz 300Mbps Outdoor CPE**  
**Data sheet**

## Highlights

- 1000mW High power output, coverage up to 5KM for PTP and PTMP application
- Wireless B/G/N speed up to 300Mbps
- Support AP, Repeater mode
- Support setting Button and LED for quickly paired
- Support open frequency from 2.4GHz-2.484GHz
- Inside 60 degree 14dBi Directional Antenna Technology
- 30dBm High-Power design
- 2x2 MIMO Technology
- Passive PoE Adapter supports up to 100 meters
- Qualcomm QCA9531 600MHz Chipset, 64MB RAM
- 10KV Lightning Protection



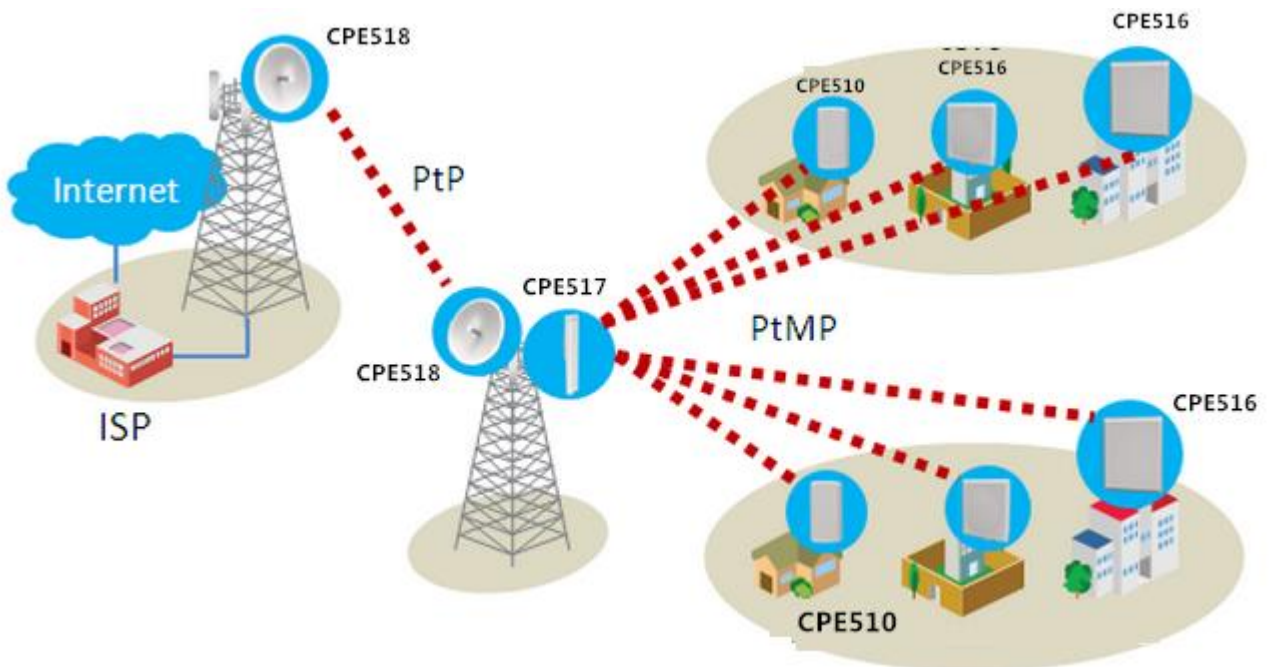
## Product Description

Wi-Tek's WI-CPE211 V2 is a 2.4GHz 300Mbps 2x2 MIMO outdoor wireless CPE based on 802.11b/g/n technology. It is high performance, cost-effective and dedicated to long distance wireless network solutions. Featuring the revolutionary Wi-Tek technology in firmware design and 14dBi directional dual-polarized antenna, WI-CPE211 V2 is specialized designed for rural Internet access, long distance wireless data transmission,

wireless coverage extension and other industrial wireless solutions. WI-CPE211 V2 is widely used in various fields of communication:

- ◆Point-to-point, Point-to-multipoint wireless communication
- ◆Wireless Video Surveillance
- ◆Enterprise wireless LAN interconnection
- ◆Mobile operators WISP large customer access system
- ◆Wi-Fi Wireless city coverage

## Typical Applications



## Specifications

HARDWARE FEATURES	
<b>Processor</b>	Qualcomm QCA9531
<b>Memory</b>	64MB SDRAM 16MB Flash
<b>Interface</b>	2X10/100BASE-TX Ethernet Interface
<b>Power Supply</b>	24V Passive PoE Adapter Included
<b>Power Consumption</b>	8W
<b>Dimensions ( H x W x D )</b>	260x85x50mm
<b>Antenna Type</b>	Built-in 14dBi Dual-polarized Antenna Horizontal beam width: 60degree Vertical beam width: 15degree
<b>Protection</b>	10KV Lightning Protection
<b>Enclosure</b>	Outdoor UV Stabilized Plastic IP67 waterproof Certification

WIRELESS FEATURES	
<b>Wireless Standards</b>	802.11b/g/n

<b>WIRELESS FEATURES</b>	
<b>Protocol</b>	CSMA/CA, TCP/IP, IPX/SPX, NetBEUI, DHCP
<b>Wireless Mode</b>	AP, Repeater
<b>Wireless Speeds</b>	11a:54M,48M,36M,24M,18M,12M,9M,6Mbps 11n:6.5M, 13M, 13.5M, 19.5M, 26M, 27M, 39M, 40.5M, 52M, 54M, 58.5M, 65M, 81M, 108M, 121.5M, 135M, 150M, 270M, 300Mbps
<b>Frequency</b>	2.4GHz-2.484GHz
<b>Transmission Power</b>	30dBm(1000mW)

<b>SOFTWARE FEATURES</b>	
<b>Wireless Configurations</b>	802.11b/g/n Modes Selectable Channel Width: 20/40MHz Automatic Channel Selection Transmission Power Control Dynamic Frequency Selection (DFS) WDS Enable/Disable Security: WPA/WPA2, WPA-PSK/WPA2-PSK (AES/TKIP) Encryption, 64/128/152-bit WEP Encryption SSID Broadcast Enable/Disable Distance/ACK Timeout Setting Wireless MAC Address Filter Wireless Advanced: > Beacon Interval/RTS Threshold/Fragmentation >Threshold/DTIM Interval/AP Isolation/Short GI/Wi-Fi Multimedia
<b>Management</b>	WEB management
<b>System-level Optimizations</b>	Optimized IGMP Snooping/Proxy for multicast applications Hardware watch dog

<b>OTHERS</b>	
<b>Certification</b>	CE
<b>Package Contents</b>	1*CPE 1*PoE Adapter

OTHERS	
	1* Pole Mounting Kit included
<b>System Requirements</b>	<p>Microsoft Windows 98SE, NT, 2000, XP, Vista™ or Windows 10, Windows 8, Windows 7, MAC OS, NetWare, UNIX or Linux.</p> <p>Note: We recommend you to use one of following Web browsers for an improved user experience: Google Chrome, Safari, and Firefox. IE browsers are not recommended.</p>
<b>Environment</b>	<p>Working Temp: -40 ~ 70°C Storage Temp: -40 ~85°C Working Humidity: 10%~95% non-condensing</p>



**WIRELESS-TEK TECHNOLOGY LIMITED**  
[www.wireless-tek.com](http://www.wireless-tek.com)  
 Email: [sales@wireless-tek.com](mailto:sales@wireless-tek.com)  
 Technical Support: [tech@wireless-tek.com](mailto:tech@wireless-tek.com)