



WI-CPE517
5.8GHz 300Mbps
Outdoor CPE with Sector antenna
Data sheet

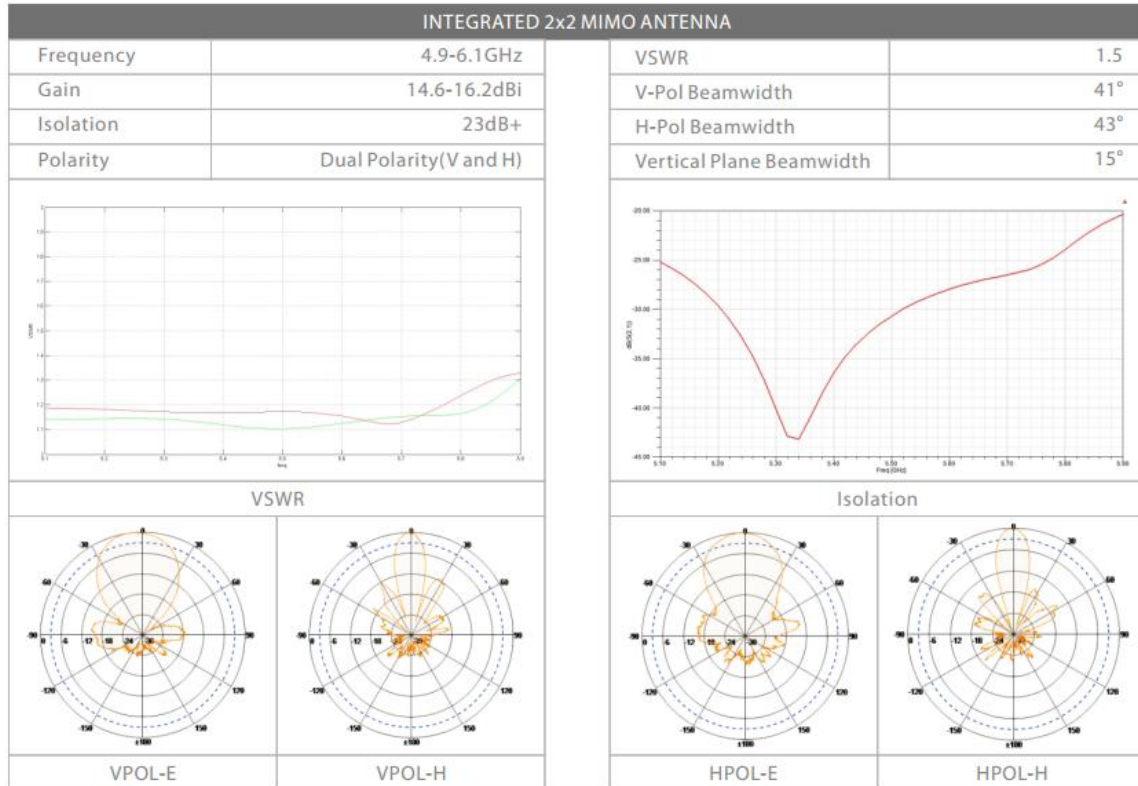
Highlights

- 500mW High power output, coverage up to 15KM for PTP and PTMP application
- Wireless A/N speed up to 300Mbps
- Support open frequency from 4920 to 6100 MHz
- Inside 150 degree 16dBi Sector Antenna Technology
- 27dBm High-Power design
- 2x2 MIMO Technology
- Passive PoE Adapter supports up to 100 meter
- 2 PoE Port design, support PoE Pass-through
- Atheros AR9344 600MHz Chipset, 64MB RAM
- 10KV Lightning Protection
- Super TDMA Technology



Tx Power Specs			
	Data Rate	Tx Power	Tolerance
802.11a	6-24 Mbps	27 dBm	±2dB
	36 Mbps	25 dBm	±2dB
	48 Mbps	23 dBm	±2dB
	54 Mbps	23 dBm	±2dB
802.11n	MCS0	27 dBm	±2dB
	MCS1	27 dBm	±2dB
	MCS2	27 dBm	±2dB
	MCS3	27 dBm	±2dB
	MCS4	26 dBm	±2dB
	MCS5	24 dBm	±2dB
	MCS6	23dBm	±2dB
	MCS7	23 dBm	±2dB
	MCS8	27 dBm	±2dB
	MCS9	27 dBm	±2dB
	MCS10	27 dBm	±2dB
	MCS11	27 dBm	±2dB
	MCS12	26 dBm	±2dB
	MCS13	24 dBm	±2dB
	MCS14	23 dBm	±2dB
MCS15	23 dBm	±2dB	

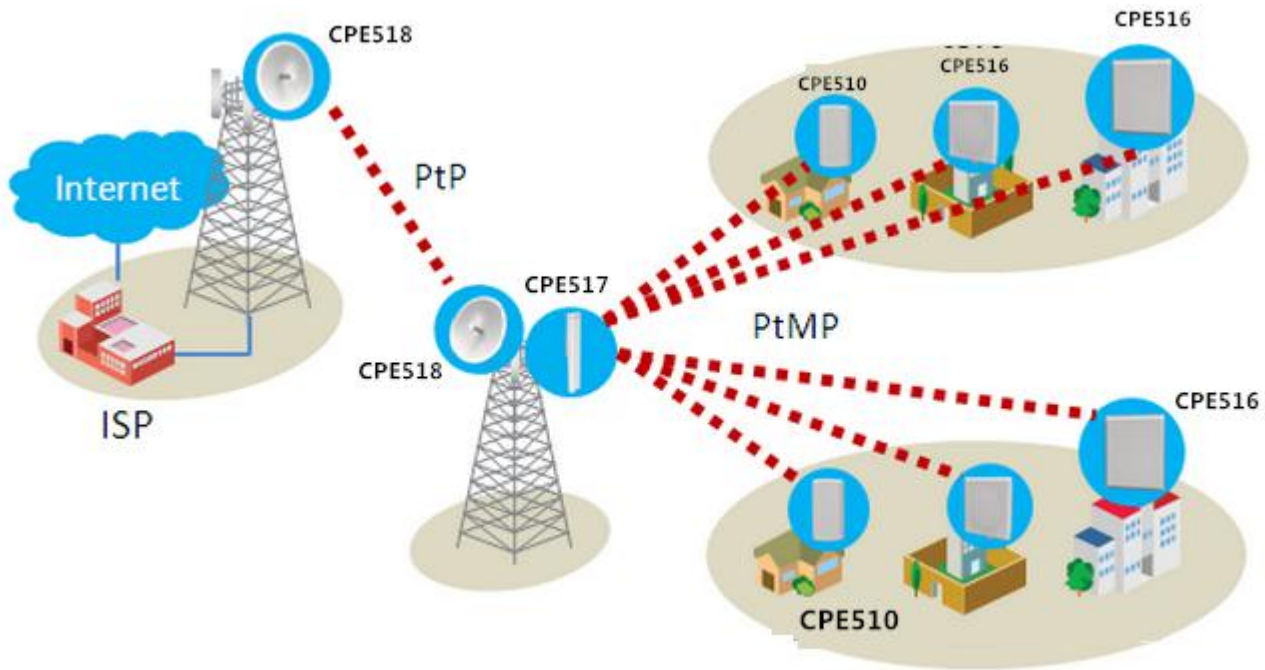
Rx Power Specs			
	Data Rate	Sensitivity	Tolerance
802.11a	6-24 Mbps	-94 dBm	±2dB
	36 Mbps	-82 dBm	±2dB
	48 Mbps	-79 dBm	±2dB
	54 Mbps	-76 dBm	±2dB
	802.11n	MCS0	-93 dBm
MCS1		-88 dBm	±2dB
MCS2		-86 dBm	±2dB
MCS3		-82 dBm	±2dB
MCS4		-80 dBm	±2dB
MCS5		-75 dBm	±2dB
MCS6		-73 dBm	±2dB
MCS7		-72 dBm	±2dB
MCS8		-93 dBm	±2dB
MCS9		-89 dBm	±2dB
MCS10		-87 dBm	±2dB
MCS11		-82 dBm	±2dB
MCS12		-81 dBm	±2dB
MCS13		-75 dBm	±2dB
MCS14		-73 dBm	±2dB
MCS15	-72 dBm	±2dB	



Description

Wi-Tek's WI-CPE517 Is a 300Mbps 2*2 MIMO Hi-Power outdoor wireless sector bridge for extremely long range point-to-point solutions. It is revolutionary radio-in-feed dish design with high performance, cost-effective and dedicated to long distance wireless network solutions. Featuring the revolutionary Wi-Tek TDMA technology, WI-CPE517 is fully compatible with Wi-Tek base station and CPE thus greatly improving the network scalability in throughput and latency. With 150degree 16dBi dual-polarized sector antenna, can work with WI-CPE515/516 or WI-CPE518 for point to multipoint wireless transmission. WI-CPE518 is best applied to rural wireless Internet, wireless backhaul and other industrial wireless solutions.

Typical Applications



Specifications

HARDWARE FEATURES	
Processor	Atheros AR9344
Memory	64MB SDRAM 8MB Flash
Interface	2X10/100BASE-TX Ethernet Interface

Power Supply	24V Passive PoE Adapter Included
Power Consumption	8W
Dimensions (H x W x D)	380x150x75mm
Antenna Type	Built-in 16dBi Dual-polarized 150degree Sector Antenna Horizontal beam width: 150degree Vertical beam width: 150degree
Protection	10KV Lightning Protection
Enclosure	Outdoor UV Stabilized Plastic IP67 waterproof Certification

WIRELESS FEATURES	
Wireless Standards	802.11a/n
Protocol	CSMA/CA,TCP/IP,IPX/SPX, NetBEUI, DHCP TDMA
Wireless Mode	AP, WDS, AP-Repeater, Client, Mesh
Wireless Speeds	11a:54M,48M,36M,24M,18M, 12M,9M,6Mbps

WIRELESS FEATURES	
	11n:6.5M, 13M, 13.5M, 19.5M, 26M, 27M, 39M, 40.5M, 52M, 54M, 58.5M, 65M, 81M, 108M, 121.5M, 135M, 150M, 270M, 300Mbps
Frequency	4920-6100MHz
Transmission Power	27dBm(500mW)

SOFTWARE FEATURES

SOFTWARE FEATURES	
Wireless Configurations	<p>802.11a/n Modes</p> <p>Selectable Channel Width: 20/40MHz</p> <p>Automatic Channel Selection</p> <p>Transmission Power Control</p> <p>Dynamic Frequency Selection (DFS)</p> <p>WDS Enable/Disable</p> <p>Security: WPA/WPA2, WPA-PSK/WPA2-PSK (AES/TKIP) Encryption, 64/128/152-bit WEP Encryption</p> <p>SSID Broadcast Enable/Disable</p> <p>Distance/ACK Timeout Setting</p> <p>Wireless MAC Address Filter</p> <p>Wireless Advanced: > Beacon Interval/RTS Threshold/Fragmentation >Threshold/DTIM Interval/AP Isolation/Short GI/Wi-Fi Multimedia</p>
Management	<p>WEP management</p> <p>SSH</p> <p>Telnet</p> <p>Serial</p> <p>SNMP</p>
System-level Optimizations	<p>Optimized IGMP Snooping/Proxy for multicast applications</p> <p>Hardware watch dog</p>

OTHERS	
Certification	CE
Package Contents	1*CPE 1*PoE Adapter 1* Pole Mounting Kit included
System Requirements	Microsoft Windows 98SE, NT, 2000, XP, Vista™ or Windows 10, Windows 8, Windows 7, MAC OS, NetWare, UNIX or Linux. Note: We recommend you to use one of following Web browsers for an improved user experience: Google Chrome, Safari, and Firefox. IE browsers are not recommended.
Environment	Working Temp: -40 ~ 70°C Storage Temp: -40 ~85°C Working Humidity: 10%~95% non-condensing